



### **Siedle-Türsprech-Set**

SET 811-1 /-2

SET 811-1 /-2 / 120 V

### **Siedle door intercom set**

SET 811-1 /-2

SET 811-1 /-2 / 120 V

### **Kit interphone Siedle**

SET 811-1 /-2

SET 811-1 /-2 / 120 V

### **Kit citofonico Siedle**

SET 811-1 /-2

SET 811-1 /-2 / 120 V



### **Siedle-Deursprek-Set**

SET 811-1 /-2

SET 811-1 /-2 / 120 V

### **Siedle-dørtelefonsæt**

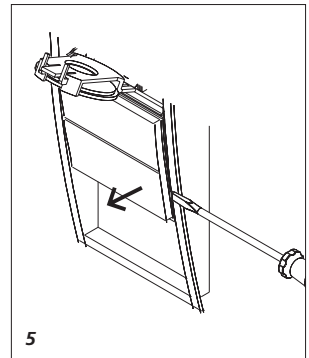
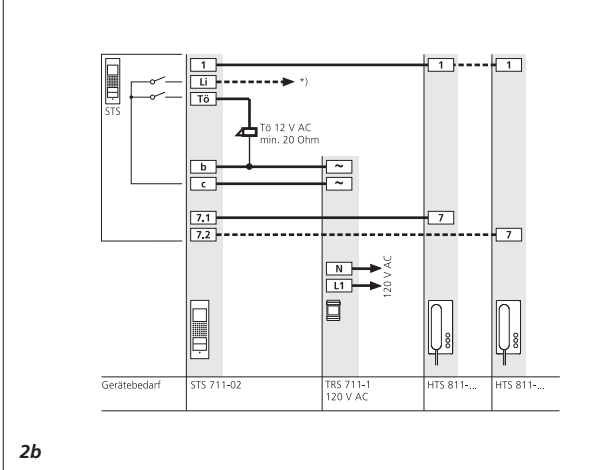
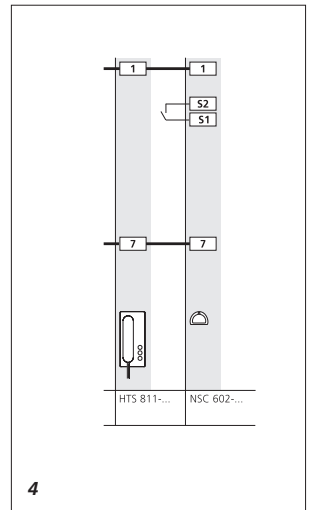
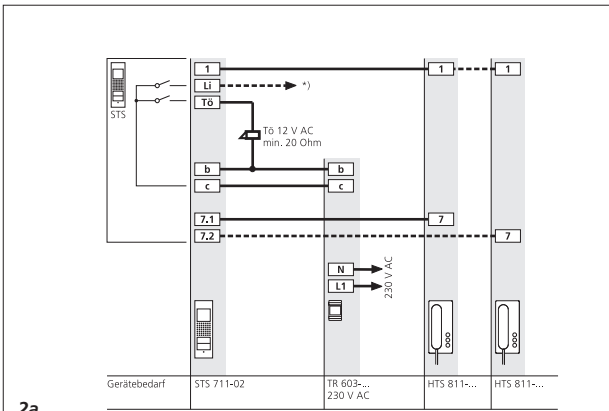
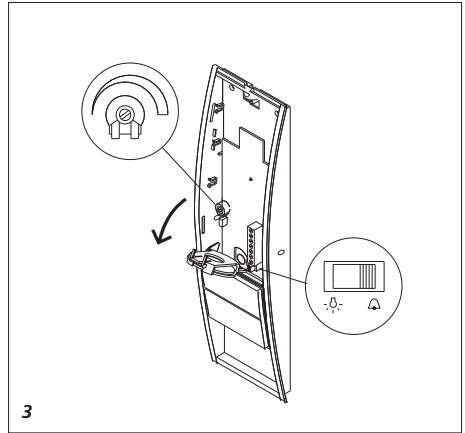
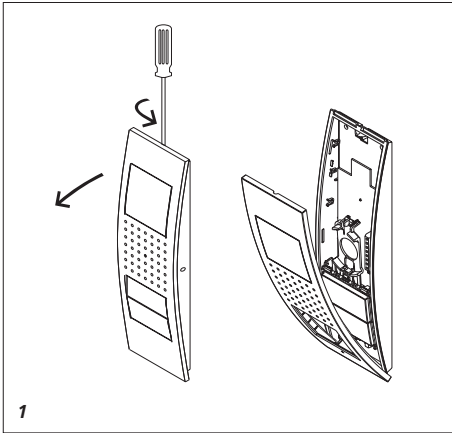
SET 811-1 /-2

SET 811-1 /-2 / 120 V

### **Siedle-dörrhögtalarset**

SET 811-1 /-2

SET 811-1 /-2 / 120 V



## Installation

### Siedle door intercom set

for one-family or two-family homes. With the basic functions calling, speech and door release. Illuminated information panel.

### Electrical voltage



**Mounting, installation and servicing work on electrical devices may only be performed by a suitably qualified electrician.**

### Scope of supply SET 811-1

- 1 Set door loudspeaker STS 711-01
- 1 in-house telephone HTS 811-0
- 1 transformer TR 603-0
- This product information

### Scope of supply SET 811-2

as described above, but

- 2 in-house telephones HTS 811-0

### Scope of supply

#### SET 811-1 / 120 V

- 1 Set door loudspeaker STS 711-01
- 1 in-house telephone HTS 811-0
- 1 transformer TRS 711-1
- This product information

### Scope of supply

#### SET 811-2 / 120 V

as described above, but

- 2 in-house telephones HTS 811-0

### Mounting

**1** Unscrew the front panel and mount the door loudspeaker. Hinge forward the loudspeaker fixture and connect the cable.

### Installation

**2a** Connect in accordance with the terminal diagram.

**2b** Terminal diagram for 120 V version.

*The story call (ERT) at the in-house telephone must not be connected.*

*Range from the transformer to the door station max. 50 m, transformer to the in-house telephone 400 m with 0.8 mm conductor material. When operating two in-house telephones in parallel, the range is reduced to 200 m.*

*\*) If only 1 HTS 811-... is connected, the upper bell button can be used as a light button (terminal LI). Use the remote switching relay 12 V AC.*

**3** Switch over if the bell button is to be used as a light button. Set the volume using the potentiometer.

**4** The secondary signal controller NSC 602-... can be used in parallel to an in-house telephone, e.g. to actuate a radio-operated chime. The NS 711-... can be operated as an additional signalling unit in parallel at an HTS 811-...

### Lettering

**5** Exchange the name plates.

### Specifications

- Protection system door loudspeaker IP 54
- Dimensions:  
Door station 85 x 290 x 35 mm  
Telephone 90 x 200 x 45 mm  
Transformer 53.5 x 89 x 60 mm

---

**SSS SIEDLE**

S. Siedle & Söhne

Postfach 1155  
D-78113 Furtwangen  
Bregstraße 1  
D-78120 Furtwangen

Telefon +49 7723 63-0  
Telefax +49 7723 63-300  
[www.siedle.de](http://www.siedle.de)  
[info@siedle.de](mailto:info@siedle.de)

© 2006/05.06  
Printed in Germany  
Best. Nr. 0-1101/035829